

# HOMES & LIVING®

VANCOUVER

june/july 2013

EXPERIENCE **DISTILLED DESIGN** WITH GAILE GUEVARA | ESCAPE WITH H&L TO **LONDON, ENGLAND** | WHOLESOME **ALFRESCO ENTERTAINING**

## H&L'S ULTIMATE KITCHEN ISSUE

IMPECCABLE TASTE  
IN KITCHEN DESIGN

+ CANADIAN ROCK LEGEND  
**COLIN JAMES**  
...IN HIS ELEMENT



H&L FEATURE HOME

**LA MAISON ROUGE**  
WEST VANCOUVER, BC

DISPLAY UNTIL JULY 28TH 2013



HLMAGAZINE.COM

## TRANSFORMATIONS PURPOSEFUL INTERIORS BY PROFESSIONALS

WORDS BY JESSICA RAYMOND  
INTERIOR DESIGN BY PATRICIA GRAY  
PHOTOGRAPHS BY ROGER BROOKS

### THE VIEW IS THE THING IN THIS LUXURY VANCOUVER CONDO REIMAGINED BY CELEBRITY HOME INTERIOR DESIGNER PATRICIA GRAY

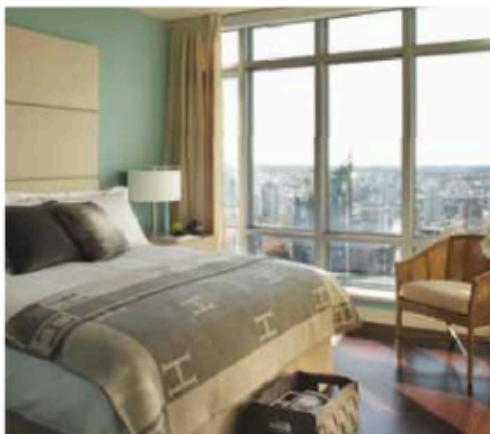
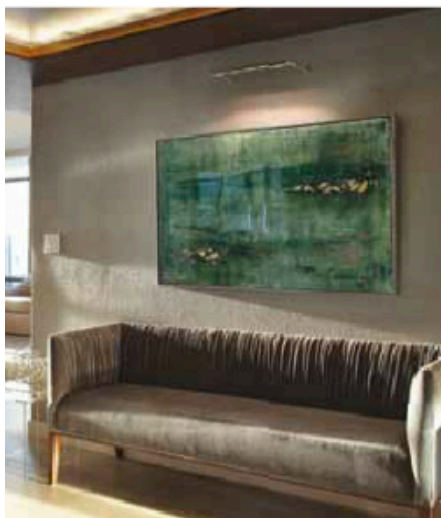
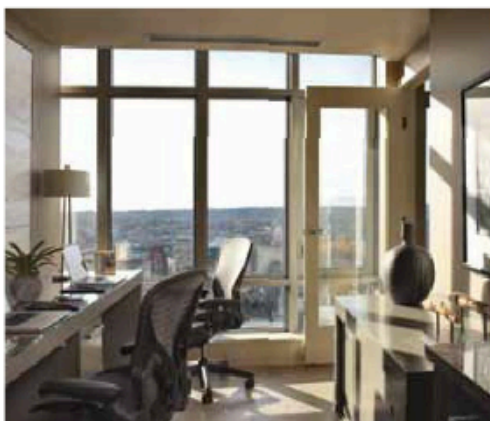
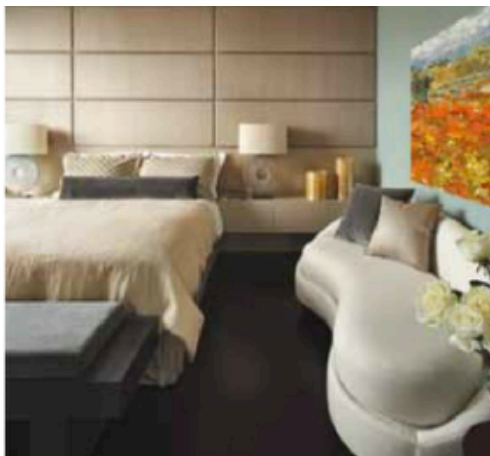
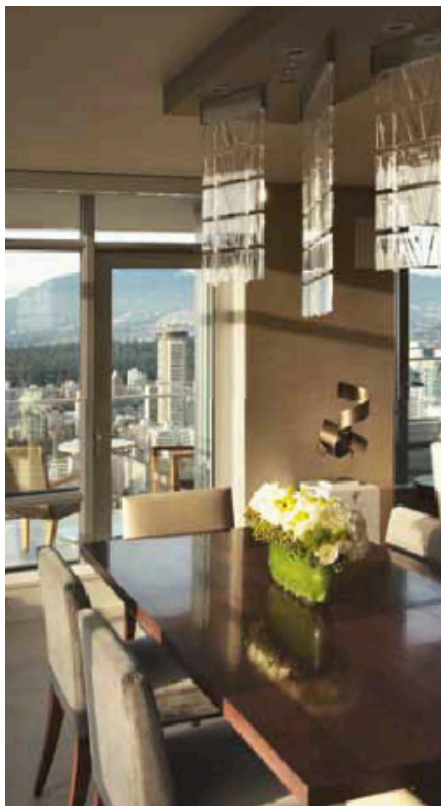
When Patricia Gray first entered this new 37<sup>th</sup>-floor Vancouver condo it was a classic bachelor pad – with a black leather sofa pit and a big flat-screen TV blocking a spectacular 180-degree view of downtown Vancouver. "It was awful; it didn't have any character," she remembers of that first look. Gray's challenge: to transform this 1,767 square-foot two bedroom plus den apartment into a luxurious space for adults that felt like a five-star hotel and maximized the five-star view from every room.

Gray's clients purchased the apartment as a second home. They would be spending half their time here, so the suite needed to be comfortable and easy to maintain. Taking clues from the clients' style, Gray used mostly natural fabrics and neutral colours – like taupe, chalk, greys and soft greens – to keep everything subdued to the view.

The view is the main attraction from the open-concept living room, dining room and kitchen. A 12- by 20-foot wool and viscose carpet from Belgium grounds the living room. Custom furnishings – including two swivel chairs done up in wool mohair, a creamy boucle sofa and a linen-upholstered slipper chair – frame the TV while still allowing the homeowners to enjoy the view. A beautiful metallic wallpaper is a neutral, yet luxurious, backdrop to the main living area.

PANORAMA  
FROM PATINA





THIS APARTMENT FEELS LIKE  
A FIVE-STAR HOTEL AND  
MAXIMIZES THE FIVE-STAR  
VIEW FROM EVERY ROOM



The luxury finishes continue in the dining room where a custom chandelier, featuring 22 handmade Italian crystal tiles, is suspended over the table. "We kept our fingers crossed through the whole process," Gray laughs. The translucent chandelier is a stunning piece that casts rainbows on the walls whenever the sun shines through the windows; yet, it doesn't detract from the view.

Adjacent to the dining room is the office with a view. Two Aeron chairs sit at a room-length desk so the homeowners can work on their laptops in comfort and style. When procrastination takes over, they can simply peer out at the city beyond the window. The printer and scanner are discretely hidden in a custom credenza.

Gray took full advantage of the spacious entryway/foyer by installing frameless sandblasted glass doors so the view is available immediately upon entry into the suite. A custom-designed settee is a luxurious addition to the foyer. For the design, Gray took her cue from Paris couture fashion by ruching the back, trimming it with walnut and upholstering it in a Great Plain's velvet. The mixed media acrylic painting above the settee is a Gray original. Cobalt green and variations of blues pop while bronze and iridescent colours add a shimmery effect. A mirror hangs on an end wall in the foyer so when you're in the suite with your back to the view, the view is reflected back.

Before Gray came in, the suite had nothing going for it, except the view. Now it's a five-star suite with a five-star view. **41**